



OPERATING WEIGHT	11 t
ENGINE OUTPUT	67 kW (91 hp)
BUCKET CAPACITIES	130-410 l
MAX. DIG DEPTH	4.31 m
MAX. REACH	8.30 m



Wheeled Excavator TW110

Technical data

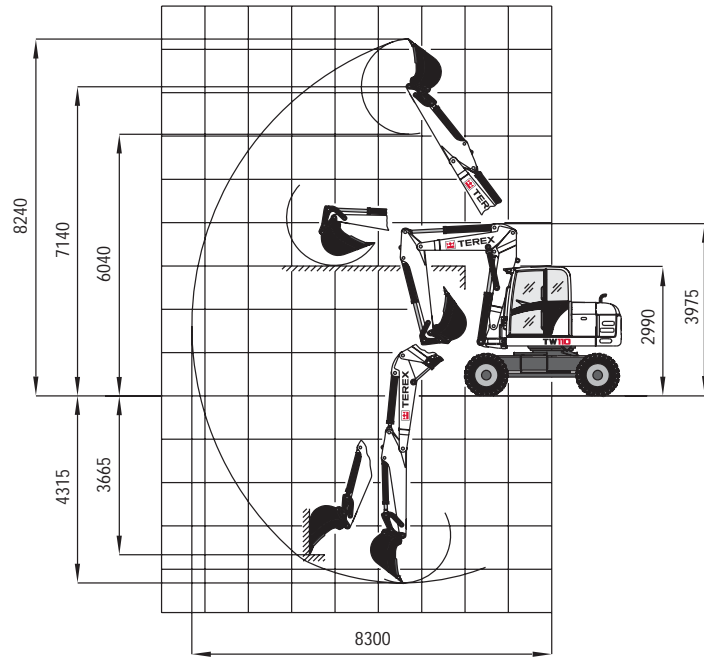
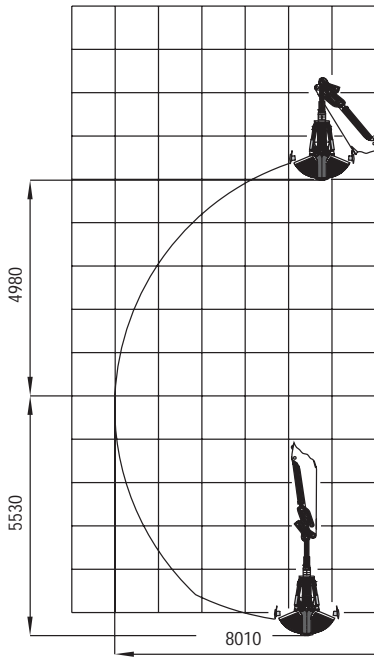
Engine	
Manufacturer, model	Deutz, BF 4M 2012
Type	4-cylinder, turbocharged diesel engine, COM II/EPA II
Combustion	4-stroke cycle, direct fuel injection
Net power rating at 2000 rpm (ISO 9249)	67 kW (91 hp)
Displacement	4040 cm ³
Max. torque	371 Nm @ 1500 rpm
Kühlsystem	Water
Electrical system	
Nominal voltage	12 V
Battery	12 V / 135 Ah
Generator	12 V / 55 Ah
Starter	12 V / 3.1 kW
Power Transmission	
Hydrostatic travel drive with automatic adjustment of drawbar pull and speed. 4-wheel drive from reduction gear on front axle via cardan shaft to rear axle. Infinitely variable speed control forward and reverse. 2 speed ranges:	
"Low"	0-6 km/h
"High"	0-20 km/h
Axles	
Front: oscillating planetary drive axle, oscillating angle 13°.	
Rear: rigid planetary drive axle.	
Tires	
Standard	9.00-20, 14 PR twin tires
Option	600/40-22.5 Extra wide-base tires
Option	315/80 R 22.5 Grader Bandenmarkt twin tires
Non-standard tires available on request	
Brakes	
Service brake: Hydraulic pump accumulator two-circuit brake, acting on oil-immersed multi-disc brakes of front and rear axle.	
Excavator brake: Acting on front and rear axle due to lockable service brake.	
Auxiliary brake: Hydrostatic travel drive in closed circuit acting as non-wearing auxiliary brake.	
Parking brake: Hydraulic spring-loaded brake, electrically actuated.	
Steering	
Fully hydraulically controlled front axle with integrated steering cylinder.	
Max. steering angle	30 °
Swing system	
Hydrostatic drive with 2-stage planetary gear and axial piston fixed displacement motor, also acts as wear-resistant brake. In addition, automatically controlled spring-loaded multi-disc brake acting as parking brake.	
Swing speed	0-10 min ⁻¹
Knickmatik®	
Lateral parallel adjustment of boom arrangement at full digging depth.	
Angle of articulation / lateral adjustment left	54° / 760 mm
Angle of articulation / lateral adjustment right	54° / 1030 mm
Fluid Capacities	
Fuel tank	240 l
Hydraulic system (incl. tank)	190 l

Operating data, standard equipment

Operating weight (three-piece articulated boom "TPA" acc. to ISO 6016)	10,990 kg
Total length, travel position ("TPA")	5860 mm
Total height, travel position ("TPA")	3975 mm
Transport dimensions:	
Three-piece articulated boom ("TPA") (L x H)	6800x2990 mm
Total width (twin tires)	2500 mm
Total height (top of cab)	2990 mm
Tread width	1942 mm
Wheelbase	2570 mm
Ground clearance below cardan shaft	440 mm
Turning radius	7200 mm
Uppercarriage tailswing	1600 mm
Uppercarriage frontswing	3000 mm
Working envelope 180°	4600 mm
Working envelope 360°	6000 mm
Bucket digging force (ISO 6015)	72,000 N
Stick digging force (ISO 6015)	58,500 N
Hydraulic system	
Travel hydraulics: Closed circuit, independent from working hydraulics. Max. pump capacity 180 l/min @ 420 bar.	
Working hydraulics: Axial-piston variable displacement pump with load sensing, coupled with a load-independent flow distribution (LUDV). Simultaneous, independent control of all movements. Sensitive maneuvers irrespective of loads.	
Max. working pressure	280 bar
Max. pump capacity	200 l/min
The thermostatically controlled oil circuit ensures that the oil temperature is promptly reached and avoids overheating. Return filter installed in oil tank allows for eco-friendly replacement of filter elements.	
Triple gear pump for all positioning and swing movements. Pressure cut-off valve for sensitive and energy-saving swing movements.	
Max. working pressure	230 bar
Max. pump capacity	39 + 26 + 11 l/min
Control circuit for work attachments:	
Max. working pressure	up to 280 bar
Max. pump capacity, adjustable	20-130 l/min
Two servo-assisted joystick controls (ISO) for excavator operations.	
Cab	
Spacious, sound-insulated full-vision steel cab. Sliding window on right-hand side. Safety glass windows, thermo windows tinted in green. Skylight thermo window, bronze tinted. Panoramic rear window. Front window supported by pneumatic springs, lockable for ventilation and slidable under cab roof. Windshield washer system. Storage box. Radio pre-installation. Left-hand outside rear-view mirror.	
Cabin heating with front window defroster by coolant heat exchanger with 3-stage fan. Choice between fresh air and recirculating air, fresh air filter.	
Fabric-covered, hydraulically cushioned driver's seat with armrests, height, tilt and weight adjustments. Safety belt.	
Instrument panel on the right hand side of the operator's seat with visual & acoustic warning device, hour-meter and safety module.	
Working flood lights Halogen H-3.	
Sound level values in compliance with EC-directives.	

Wheeled Excavator TW110

Working range: Three-piece articulated boom "TPA"



Lifting capacities

Bucket hinge height Dipperstick 2000 mm		Load radius from center of ring gear											
		3.0 m		4.0 m		5.0 m		6.0 m		7.0 m		7.1 m	
		End	Side	End	Side	End	Side	End	Side	End	Side	End	Side
3.0 m	S	-	-	3.11	2.63	2.44	1.91	2.39	1.31	1.98	0.92	-	-
	T	-	-	2.56	2.40	1.76	1.71	1.28	1.18	0.92	0.83	-	-
1.5 m	S	4.91	3.87	3.11	2.51	2.72	1.79	2.71	1.25	1.94	0.89	1.89	0.83
	T	3.88	3.54	2.51	2.30	1.77	1.62	1.20	1.13	0.83	0.78	0.80	0.74
0 m	S	6.50	3.60	3.88	2.36	3.00	1.68	2.57	1.22	1.79	0.88	1.79	0.85
	T	3.65	3.31	2.35	2.21	1.65	1.54	1.18	1.12	0.84	0.79	0.82	0.76
-0.9 m	S	7.26	3.43	4.25	2.16	3.34	1.50	2.51	1.11	1.77	0.86	-	-
	T	3.43	3.25	2.27	2.04	1.59	1.43	1.15	1.03	0.87	0.81	-	-

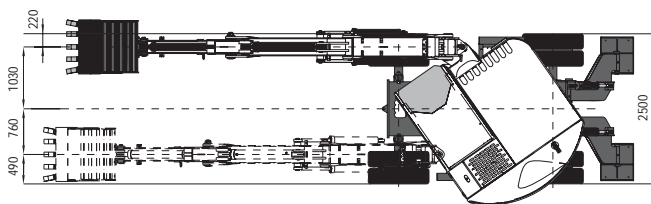
All values in tons (t) were determined acc. to ISO 10567 and include a stability factor of 1.33 or 87% of the hydraulic lifting capacity. All values were determined with load hook. If a bucket is attached, the difference weights bucket minus load hook must be deducted from the permissible payloads. When used for load hook applications, excavators must be equipped with hose-rupture valves and overload warning device in compliance with EN 474-5.

Working equipment: Three-piece articulated boom, twin tires, dipperstick 2000 mm.

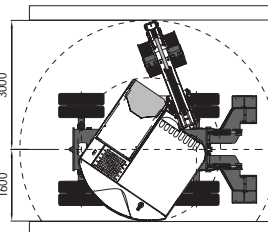
Abbreviations: S = Supported by blade, T = Traveling

Dimensions

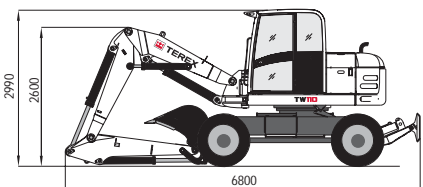
Illustr. 1:
Excavation within the entire width of the machine



Illustr. 2:
Working envelope



Illustr. 3:
Transport position



Terex GmbH Schaeffstrasse 8
D-74595 Langenburg, Germany

PHONE +49 (0)7905 / 58-0 FAX +49 (0)7905 / 58114
EMAIL info@terex-schaeff.com WEB terex-schaeff.de

TW1100407-EN (2) Effective date: 1. April 2007. For further information, please contact your local distributor or the TEREX Schaeff sales office listed. Continuous improvement of our products is a TEREX policy. Product specifications are subject to change without notice or obligation. The photographs and drawings in this brochure are for illustrative purposes only. Products and services listed may be trademarks, service marks or trade-names of TEREX Corporation and/or its subsidiaries in the USA and other countries and all rights are reserved. Copyright © 2007 TEREX Corporation. "TEREX" is a Registered Trademark of TEREX Corporation in the USA and many other countries. Printed in Germany

Ref.-No.: 577209512